



# ANNUAL REPORT 2025



## TABLE OF CONTENTS

Letter from Haiti .....	3
Our Model .....	4
Our Clinics .....	6
Primary Care & Specialty Care .....	8
Our Impact .....	10
Financials & Donors .....	11



# MISSION & VISION

## VISION

Accessible, affordable, high-quality healthcare for Haiti — today and in perpetuity.

## MISSION

To create a model for sustainable, community-based healthcare in Haiti that empowers people to lead healthier lives.

### A Letter from C2C's Managing Director:

Dear Friends of C2C,

The world changed in 2025. Long-standing assumptions about overseas development assistance were upended almost overnight. For many organizations working in places like Haiti, this was a crisis. For C2C, it was a confirmation.

We have always believed that a healthcare model dependent on philanthropy alone is a healthcare model on borrowed time. That conviction has shaped how we structure our financing, how we partner with the government, and how we build and expand our service delivery platform. C2C was wholly prepared for the upheaval of 2025. Fortunately, despite years of instability in Haiti, the northern regions have remained stable, our network of community-based clinics stayed open, resourced, and serving a record number of patients. Our 190 staff members — nurses, doctors, community health workers, and the operations teams who support them — never stopped showing up.

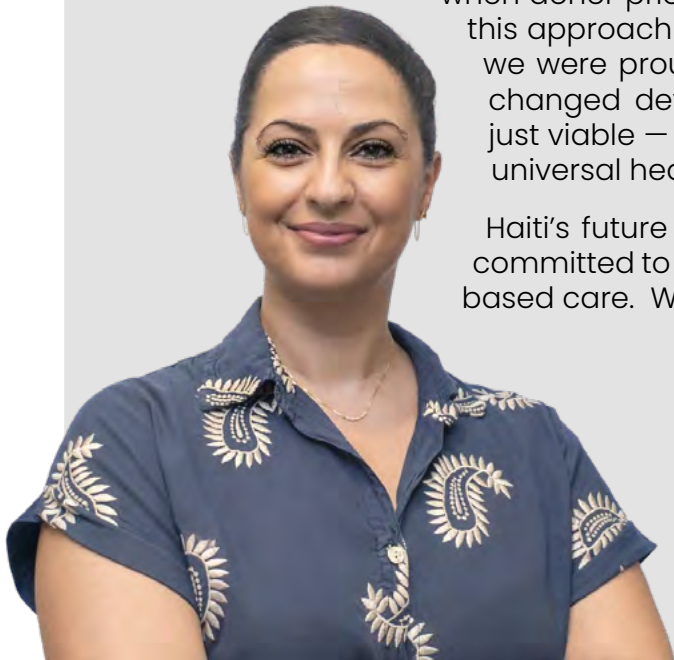
We believe every Haitian deserves world-class healthcare, and we hold ourselves to that standard. From routine pediatric vaccines to maternal health to malnutrition treatment and routine curative care, our patients receive care delivered with clinical excellence and genuine compassion. They deserve nothing less, and our teams demand nothing less of themselves.

We also believe that a healthcare model only matters if it lasts — and that kind of stability requires a fundamentally different architecture. By combining patient fees, government partnership, and philanthropic support, we have built something that does not collapse when donor priorities shift. In 2025, the Swiss Re Foundation recognized this approach with their Entrepreneurs for Resilience Award, an honor we were proud to receive on behalf of every patient we serve. In a changed development landscape, we believe C2C's model is not just viable — it is the model for the future. It is the only way to deliver universal healthcare in Haiti at scale and over time.

Haiti's future is bright, and our ambitions match it. By 2030, we are committed to reaching 750,000 people with high-quality, community-based care. We are grateful you are with us on this journey.

With gratitude

**Racha Yehia,**  
Managing Director  
Cap-Haïtien, Haiti



## THE PROBLEM WE ARE SOLVING

Across Haiti, 91% of the population lives within 5km of a health facility, but only 23% can access consistent, quality services. In rural areas, that figure drops to just 5%. For a nation of over 11 million people, this gap is a matter of life and death. It means that **8–9 million people cannot access the healthcare they need and deserve**. The most vulnerable, such as pregnant women and children, are disproportionately affected. **The problem isn't a lack of clinics— it's a lack of clinics that function.**

## C2C IS BUILDING A DIFFERENT FUTURE FOR HEALTHCARE IN HAITI

For more than fifteen years, Care 2 Communities (C2C) has partnered with Haiti's Ministry of Health to operate a network of community-based primary care clinics across northern Haiti. Today, our clinics serve more than 100,000 patient visits annually, providing families with reliable access to care, close to home.

What makes C2C different is our social business model. Rather than relying solely on outside aid, **our clinics are sustained through a blended financing approach** that combines philanthropy, affordable patient user fees, and government partnership. This model strengthens local ownership, increases resilience, and helps clinics remain operational even during periods of instability.

C2C was built around a simple belief: **healthcare systems become stronger when families have a dependable place they can return to over time**. Through integrated clinic and community-based care, we provide preventive services, maternal and pediatric care, treatment for acute illness, chronic disease management, diagnostics, and follow-up care delivered both in clinics and in homes.

IN MANY RURAL COMMUNITIES IN HAITI,  
CONSISTENT PRIMARY HEALTHCARE  
SIMPLY DOES NOT EXIST.

**C2C IS HERE TO CHANGE THAT.**



# OUR MODEL



**C2C's model for community-based care is holistic.** We bring world-class healthcare close to home: treating illness, preventing disease, and meeting each community's most urgent health needs where they arise. **Trust-based healthcare doesn't happen at a distance;** it happens at the community level, family by family, and patient by patient.



## TRUST-BASED CARE

C2C prioritizes our communities in all that we do. Our services are community-based and community-led – local staff serve their own communities, meeting them where they're at.

## REVENUE GENERATION

C2C's services are sustained by community investment and low user fees, subsidized by in-kind support from Haiti's Ministry of Health and through philanthropy.



## GOVERNMENT PARTNERSHIP

C2C partners with Haiti's Ministry of Health to co-own existing public clinics, building on the strengths of the government.

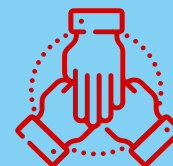


CARE 2 COMMUNITIES

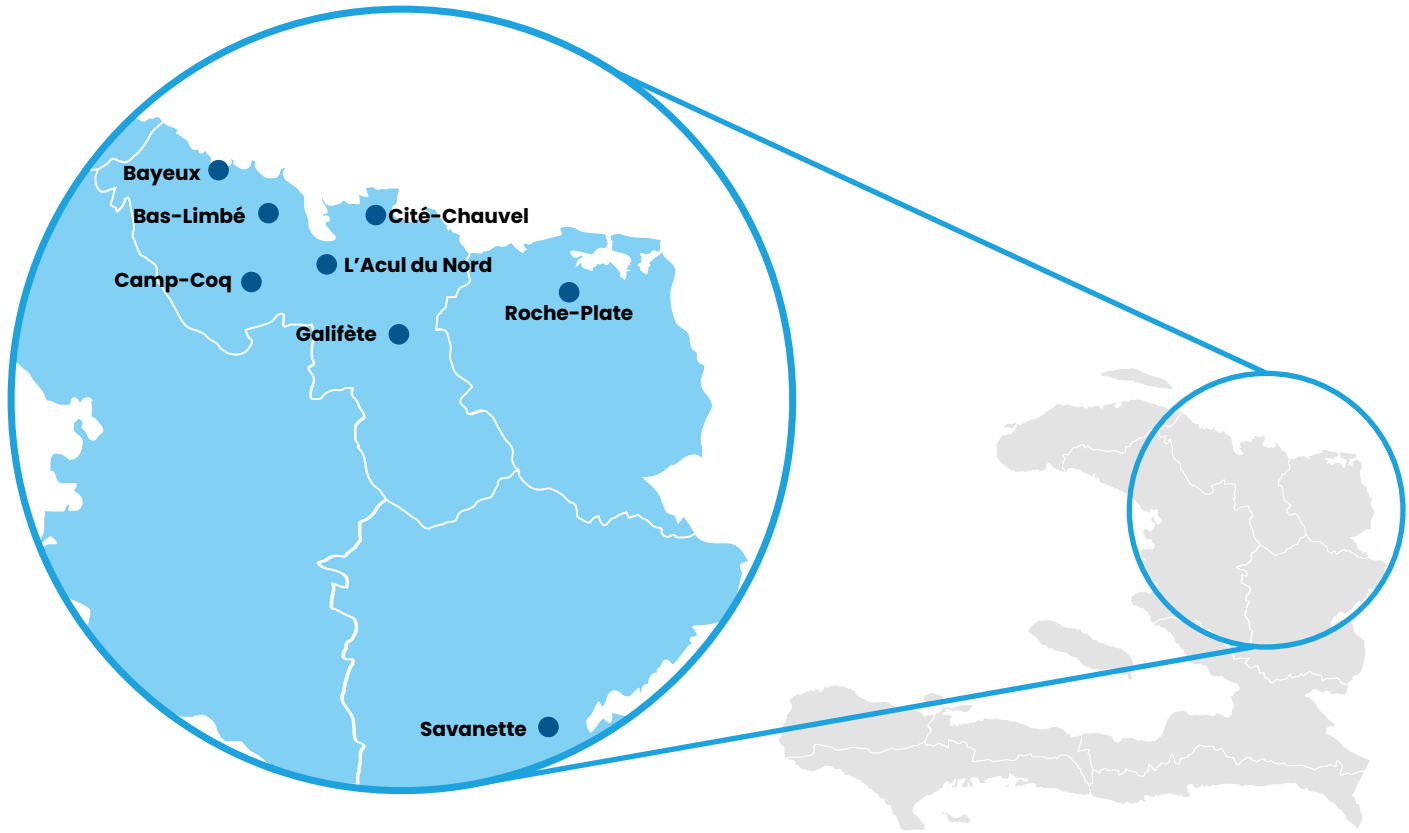


## HEALTHCARE EXCELLENCE

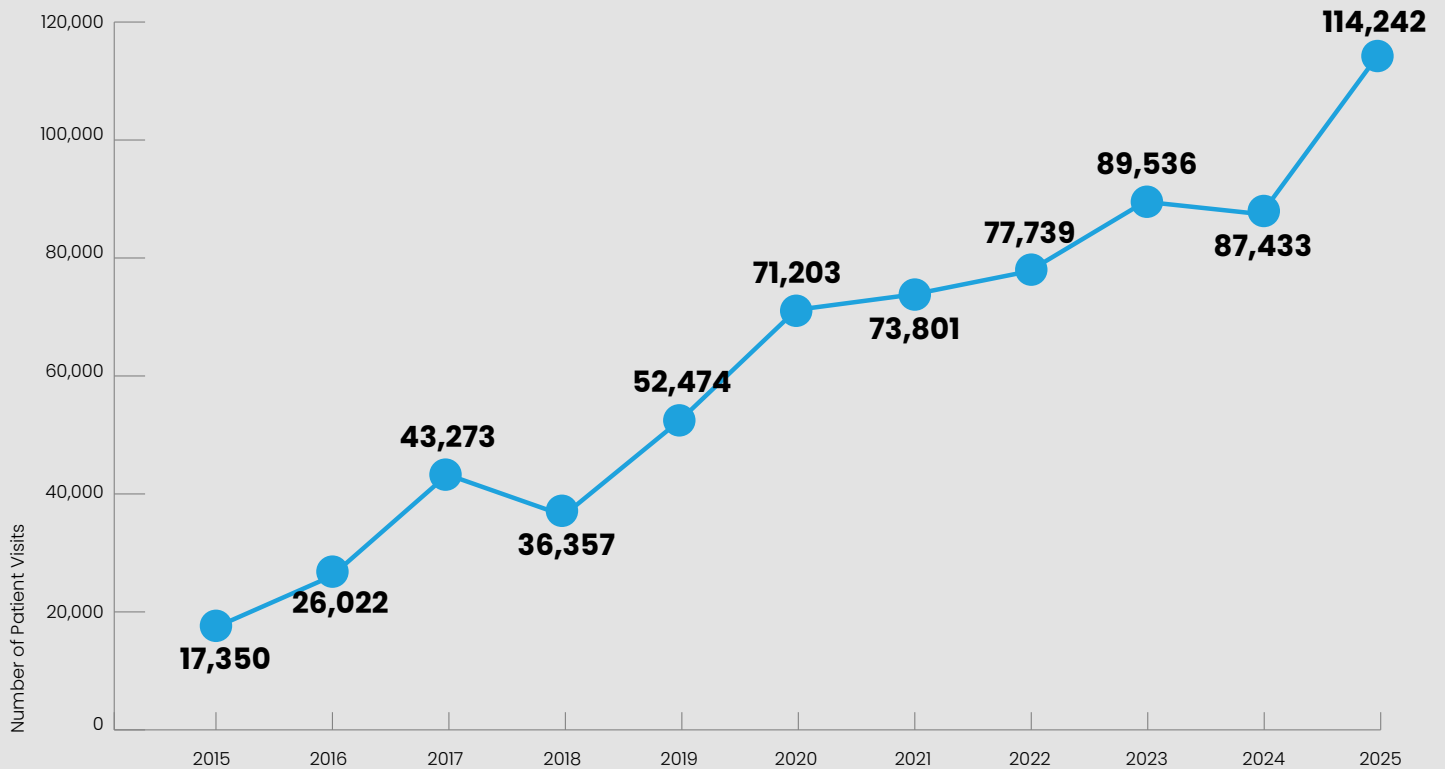
Through C2C's proven management model, operations are streamlined, moving toward economies of scale. Every clinic is full-service, offering consultation, labs, and medications all in one place.



# WHERE WE WORK



## ANNUAL PATIENT VISITS



# C2C IS BUILDING A DIFFERENT FUTURE FOR HEALTHCARE IN HAITI

## TECHNOLOGY AS A MULTIPLIER FOR CARE

Every patient at C2C has a digital health record through OpenMRS, linking consultations, lab results, and prescriptions in one system. Community Health Workers use CommCare to track home visits, flag high-risk cases, and coordinate follow-up care. Missed appointments trigger outreach calls, with SMS reminders being added across the network.

This connected system allows C2C to provide continuous care, identify problems early, and generate reliable data that proves long-term healthcare at scale is possible in Haiti.



## THE BRIDGE BETWEEN CLINIC AND COMMUNITY

C2C's Community Health Workers extend care beyond the clinic into patients' homes and neighborhoods. Through household visits, they provide health education, vaccination campaigns, malnutrition screenings, and postnatal follow-up care, helping identify issues early and keeping patients connected to care.

This network is central to C2C's model and enables the long-term relationships that improve health outcomes.



## BUILT TO LAST

Many healthcare services in Haiti disappear when funding ends. C2C was built differently: to remain in communities for the long term. Through affordable patient fees, partnership with Haiti's Ministry of Health, and targeted philanthropy, clinics cover over 100% of core operating costs through patient revenue alone. Every donated dollar unlocks an additional \$1.40 through government and patient contributions.

This is a resilient, locally rooted model designed to endure.

# PRIMARY CARE IS COMPREHENSIVE

## MATERNAL & NEWBORN HEALTH

Healthy communities begin with healthy pregnancies, safe deliveries, and strong starts to life – making maternal and newborn care one of the most powerful investments in Haiti’s future.



**3,967**

**pregnant women served in 2025**



**15%**

**increase in antenatal care completion from 2024**

## SEXUAL & REPRODUCTIVE HEALTH

When young people have access to accurate health education and reproductive care, they gain the knowledge, agency, and support to make informed decisions that shape healthier futures for themselves and their communities.



**419**

**adolescents graduated from school-based sexual health and consent program.**



**80%**

**of participating students demonstrated retained knowledge of health behaviors and health risks one year later.**

## COMMUNITY HEALTH

Healthcare systems become stronger when care extends beyond clinic walls – reaching families where they live through trusted relationships, prevention, and early intervention.



**24,151**

**community health visits conducted. Our CHW team vaccinated children, screened for hypertension, and conducted post-natal follow-up visits.**

## MALNUTRITION TREATMENT

Treating malnutrition early not only saves lives, but protects childhood development, strengthens long-term health, and helps families break cycles of vulnerability before they become crises.



**271**

**children enrolled in treatment for severe acute malnutrition in 2025**



PRIMARY CARE WORKS WHEN FAMILIES HAVE A PLACE THEY CAN TRUST - A CLINIC WHERE THEY RETURN TO BEFORE SMALL PROBLEMS BECOME HEALTH EMERGENCIES.





### «C2C Saved My Child»

*Marie Carme, Letiro, Bas Limbé*

My name is Marie Carme, a mother of five. My youngest son, now 27 months old, had become frail, restless, and swollen from severe malnutrition. I knew something was wrong but did not know where to turn.

After hearing about a pediatric screening from the Bas Limbé (Sinek) clinic, I brought him to see the health team. The nurses examined him, explained his condition, and immediately provided therapeutic food along with instructions on how to use it. Over the following weeks, the team visited our home to check on his progress and support his recovery. Soon, my son began gaining weight and no longer needed treatment.

C2C saved my child. Today, he runs and laughs alongside the other children at nursery school. That means everything to me.



### “The Right Choice for Our Family”

*Roselène Damis, Novion, Bayeux*

I am 34 years old, and my husband and I have six children. We never really talked about family planning. I also believed my high blood pressure meant I had very few safe options.

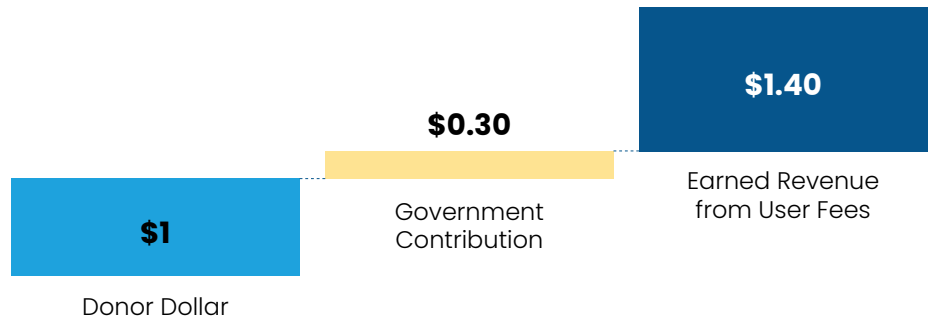
One day, while taking my seven-month-old to the Bayeux clinic for a Vitamin A appointment, I heard nurses discussing a long-term contraceptive method that could last up to ten years. I asked questions, and the nurse explained everything clearly and kindly, including that it was safe for women with hypertension. I went home and spoke openly with my husband. Together, we decided this was the right choice for our family.

Since then, I have lived with more peace of mind. I can care for my children without the constant fear of another pregnancy before I am ready. I still receive care for my blood pressure at the same C2C clinic, and I remain grateful for the support and guidance they gave me.



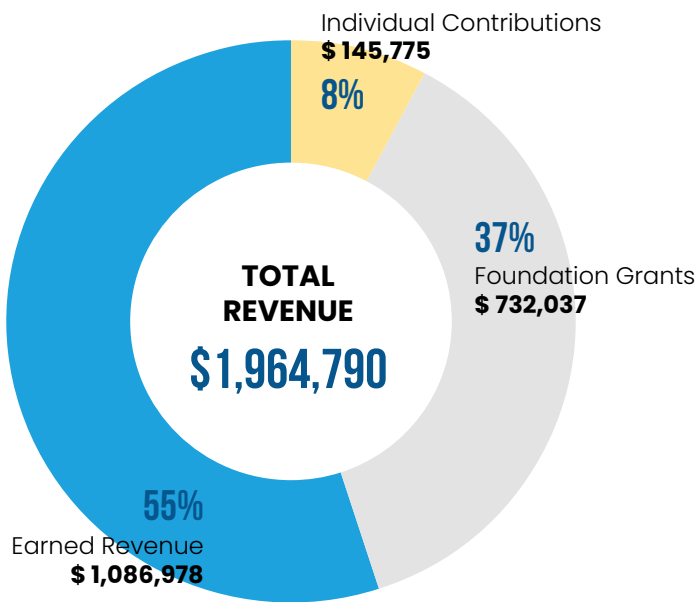
# FINANCIALS

**Every contribution to C2C goes further.** C2C's financial model transforms every \$1 donated into \$2.70 of healthcare value by combining philanthropic investment with local revenue and government support.

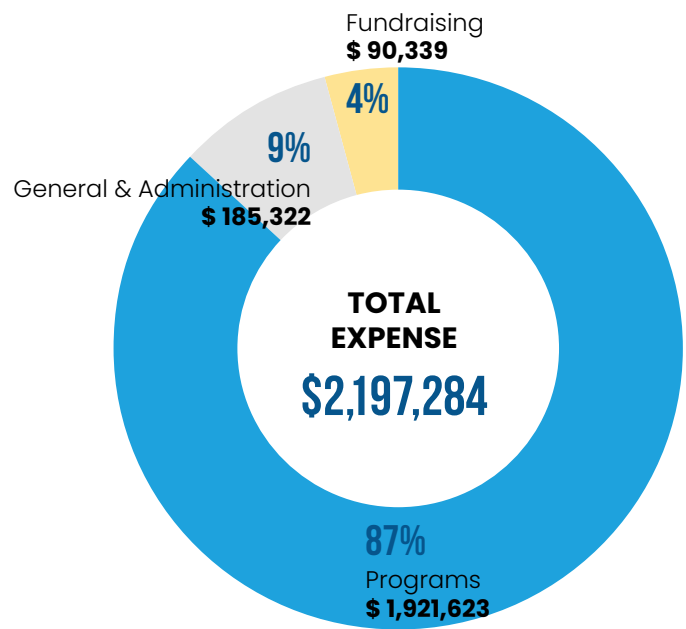


## FISCAL YEAR 2025 STATEMENT OF ACTIVITIES

### INCOME



### EXPENSE



## FOUNDATION SUPPORT



 [www.care2communities.org](http://www.care2communities.org)

 Care2Communities

 care\_2\_communities

 care-2-communities

Donate:



#### 2025 Board of Directors

Allison Howard-Berry,  
Co-Founder & Chair

Elizabeth Sheehan, MPH,  
Co-Founder

Christine Candio, LFACTHE

Claire Dillavou, PhD

Jay Evans MSc, FRCSEd, FRRHH

Naike Ledan

Elizabeth Louis, PhD

Sarah Matousek, PhD, MPH

Rupal Ramesh Shah, MPH

Glenn Paredes

Sheila Phicil, LFACTHE

Victor Silva, MPP, MBA

Kim Wilson, MD, MPH

